

The *Vo*ice

*From the Pastor
Natacha Kemp*

of Good Shepherd Lutheran Church

February 2011

Volume 14 Issue 2

God's Love Languages

A Reading from Mark 12: 28-31

One of the teachers of the law came and heard them debating. Noticing that Jesus had given them a good answer, he asked him, "Of all the commandments, which is the most important?" "The most important one," answered Jesus, "is this: 'Hear, O Israel, the Lord our God, the Lord is one. Love the Lord your God with all your heart and with all your soul and with all your mind and with all your strength.' 31The second is this: 'Love your neighbor as yourself.' There is no commandment greater than these."

Dr. Gary Chapman, author of the book, *The Five Love Languages*, determined that after 30 years of counseling married couples, he determined that each person has their own love language. The five love languages are words of affirmation, acts of service, quality time, receiving gifts, and physical touch.

Think about it...when a person loves their spouse with their primary love language there is nothing better in the world for them. We are told each person has a love tank, some call it a love bank or even a fuel tank. This is a reservoir that holds all the love one is showed, but the problem is, everybody's tank leaks, so it needs to be refilled constantly. The only way to fill one's love tank is to speak their primary love language.

God has commanded us to love him a specific way, but many times we decide to love God our own way. Not only is this being disobedient, but also ungrateful for all He has done for us. Paul tells us that nothing can separate us from the love of God, and he also says that God loved us when we were sinners. If we do not love God as we are commanded, we are not doing the good we know to do, and James says that is sin. Learning how to give God all your heart, soul, mind and strength, not only speaks God's love language, but also makes it so much easier to love people.

The Torah, the first five books of the Bible contains about 613 laws (365 prohibitions and 248 commands). In Jesus' day, Jewish teachers were wrestling with the idea of how all these commandments relate to each other, and whether these 613 laws can be summed up with one or more basic commandments and that is exactly what Christ ventured to do in this passage. He summed up 613 laws into two commands. So in essence, when you are obeying these two commands you are fulfilling all 613 laws.

Just as humans have a primary love language, so does God. His love language comes from the totality of a human. Everything that we are made of is used to bring love to God. God's greatest Love language is lifestyle worship. To speak God's Love Language is to give Him your whole being! You are the reason why God loves. God loves to love people, and He created us to Love Him. To love God is the highest form of worship.

We are to connect with God heart to heart! God wants our hearts to be in unison with His heart. I once heard the saying, "the heart of the matter is the matter of the heart." Our hearts are the part of our being that we use when we worship God, but also the heart can worship other things such as the things of this world. God gets all of our heart, and everything else is second priority. Jesus tells us to seek Him first, then all those other things we need in life will come. Connect your heart with God's heart, by giving him first priority.

Your Bible is the mind of God. I challenge you to read God's Word daily and not just on Sunday. It is his word that has power. It is God's word that we are to live by. God calls us to love him with our entire being. It is essential that we do just that. God graciously showed his love for us on the cross; let us love Him with all our heart, soul, mind, and strength. Once we do that to the best of our ability, we are able to love people...not just on February 14th—Valentine's Day, but daily.

Recipe for a Happy New Year Take twelve whole months, Clean them thoroughly of all bitterness, hate, and jealousy, Make them just as fresh and clean as possible. Now cut each month into twenty-eight, thirty, or thirty-one different parts, but don't make up the whole batch at once.

Prepare it one day at a time out of these ingredients. Mix well into each day one part of faith, one part of patience, one part of courage, and one part of work.

Add to each day one part of hope, faithfulness, generosity, and kindness. Blend with one part prayer, one part meditation, and one good deed. Season the whole with a dash of good spirits, a sprinkle of fun, a pinch of play, and a cupful of good humor.

Pour all of this into a vessel of love.

Cook thoroughly over radiant joy, garnish with a smile, and serve with quietness, unselfishness, and cheerfulness.

You're bound to have a happy new year.

--- Author Unknown



Anger is a condition in which the tongue works faster than the mind.

You can't change the past but you can ruin the present by worrying over the future.

Items needed to give to the homeless who attend the Community Breakfast @ St. Paul's

Backpacks (any style), Pants/ Slacks-Shirts/T-shirts/ Blouses, Socks, Shoes, Boots, Athletic Shoes, Baseball Caps/ Hats/ Belts, Toiletries (individual) - Sunglasses, Books (paperbacks; crossword puzzle books, etc.) Sport Water Bottles (refillable kind), Snack Crackers/ Cookies (individually wrapped)

Please continue to give as you can and thank you to everyone who prays for this ministry.

Bags of Blessing From the Heart

Now until Feb. 20th we are collecting for bags of blessings. It is a program to collect personal items for people in need in Wichita. They will be delivered to shelters & emergency assistance centers in the area. Good Shepherd's goal is to deliver 24 bags.

Still Needed:

- 4 toothbrushes**
- 20 lotions (hand)**
- 16 deodorants**
- 4 tooth pastes**
- 22 shave creams**
- 22 chapsticks**

Extra items such as knit caps, gloves, socks, & treats can also be brought. Please place on table in Fellowship Hall.

Commitment Giving Card

If you have filled out a commitment of giving card for 2011 we say "THANK YOU". For others, who still need to fill out a card, please do so and if possible increase your giving over last year by 1%. In this year, with the economy as it is, we must remember that our first fruits should go to God and His church. If you need a card, see Nelson Haugh, Treasurer.

Angel Food

Angel food **Order forms for February** will be in the Church January 30th, 2011

I will need your order and payment by Thursday February 17th

Distribution will be Saturday February 26th at Good Shepherd between 9:30 –9:40am

If you have any questions
Call 260-1277 or email me at dmoran27@cox.net

Thanks Doris Moran



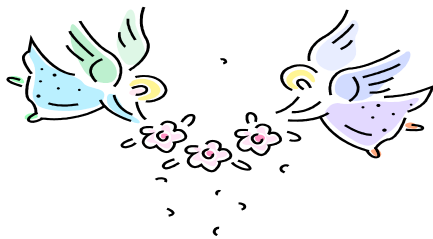
Birthdays in February

- 1 Louis Plummer
- 15 Charles "Bud" Bryant
- 21 Loretta Niedens
- 28 Carol Keller



FEBYRARY ANNIVERSARIES

02/26/02 Kim & Orville Reed



Please remember these individuals in daily prayer:

- Irene Henschel (Nursing Home)
- Louis Plummer (Nursing Home)
- Edna Mae Wickland (Rehab for stroke)
- Mike Howard
- Loretta Niedens
- Felisha Brackhahn
- Viola Brozek
- Hermie Medlock
- Todd Whisler
- Jim Chapman (friends of Bryant's)



Prayer Support Available

If you have a concern for which you would like much timely prayer support, please call the church office (524-3401). Your concern will be communicated promptly through our prayer chain.

"Pray for one another, so that you may be healed. The prayer of the righteous is powerful and effective." James 5:16

**REMEMBER TO:
Help with the Newsletter!!
Please send articles, notes of interest, happenings, anything to share.
By March 21, 2011**

DIRECTORY INFORMATION

We are checking over the directory before we print the 2011 copy
If you have any changes please get the information to the office

Right away.

Thanks Pam

Groceries for Christmas
By Grace Lutheran Church
Thanks us for Our Help!

Thank you very much for your help and support this past year. We could not manage what we do without your help. As I have said before the need continues to grow. The Tuesday before Christmas is usually the slowest day of the year for the Food Pantry due, I think, to the extra help people receive at Christmas time. This year we had 6 people requesting help. All 6 were first time applicants.

I want to tell you a little bit about our "Groceries for Christmas" project. This year we had 22 families (54 children) on our list. Each family received 3 boxes of dry groceries, eggs, oleo, a gallon of milk, a package of brown and serve rolls, a bag each of apples, oranges, and potatoes and a turkey. Everyone received a hand knit stocking cap, and a polar fleece scarf. Each family received a quilt. Each child received a small gift and a decorated, personalized Christmas stocking filled with "Goodies".

We took over 100 polar fleece scarves to the homeless and 80 pair of tube socks that were filled with candy and snack items.

It is the help we receive from you and other sister churches that make this possible. May God bless you for your generosity.

Thank you again and may God be with you and watch over you in the coming New Year!

Bee Cline
Board of Social Ministry
Grace Lutheran Church

Angel Tree Ministry

Left over supplies and materials for the Angel Tree Ministry have been gathered up and given to Asbury United Methodist Church. If anyone in the congregation would still like to support or give to this ministry, please let Dolores know and she will see that they get your gifts. This congregation supports between 120 and 140 names, so anything that you would like to purchase to give would be alright. They would match them up to a child. They will do all the work such as wrapping, delivery, etc. Since we have supported this ministry in the past, you know what item to buy.

SECRET HEART SISTERS

Will meet at the church on Sunday, February 13, from 3:00 to 4:30pm. Please bring a gift (not to exceed \$5.00) for your **SECRET HEART SISTER**. Do not put her name on the gift, but be prepared to say something about your SISTER when you present your gift. If you are unable to attend, give your gift to Willie Cooper prior to that time.

We welcome new ladies to join the program and to come to the party. The rules are very simple: Pray for your **SECRET HEART SISTER** throughout the year; and remember her on her birthday and other special days with a greeting card, which can be placed in her church mail box. We suggest that only one gift be given—when **SECRET HEART SISTERS** are revealed.

Please come join the fun!!!

December Food Bank Taken to Grace Lutheran on 12/02/10

Two boxes of food weighting 62 pounds went to Grace Lutheran for they "Groceries for Christmas" project.

Many cans of fruits and vegetables along with cereal, ramen noodles, rice, peanut butter, Jelly, canned ham, tuna & chicken



God always gives His
best to those who leave
the choice with Him.

A hug is a great gift ...
one size fits all. It can
be given for any
occasion and it's easy
to exchange.

New Furnaces for the Church

This coming year, the church is looking at replacing two furnaces in the old part of the church at a cost of approx \$5000.00. The furnaces were installed 25 years ago and the heat exchangers are going bad. We are putting **special offering envelopes in pews** and if you would like to contribute for this purpose your gift will be appreciated! We could also use these special envelopes for other programs such as heating. Cooling and debt reduction. Just state on your check or cash envelope your preference!

9:30 February 12th

Meeting of the Women of the ELCA
Good Shepherd Lutheran Church



Eagle Scout Project

A bag of material for quilts, a puzzle, and etc were donated to Matthew McCue of Hutchinson who is working on an Eagle Scout Project that will benefit hospital patients especially those with extended stays. He will be making a variety of items with delivery to Promise Regional Medical Center and distributed by the Social Services Dept. The women of Good Shepherd collected these items and Lorraine Delzer's son took them to Hutchinson for us. I read about Matthew in the Emmanuel church newsletter. He would also welcome donations of crafts, puzzles for all ages, journals, puzzle books, new children's size blankets, and lap size quilts for adults. So if you would like to help, I'm sure he would still welcome and of these items.

Dolores Haugh, president of the women's group.

Now thru the end of February we are collecting clean used warm clothes, coats, blankets for breakfast friends at St. Paul's and the free clothing ministry at United Methodist Open Door.

GOOD SHEPHERD LUTHERAN CHURCH
COUNCIL MINUTES
JANUARY 3, 2011

The Good Shepherd Lutheran Church Council met at 7:00 p.m. on Monday, January 3, 2011. Sue Draper, President, opened the meeting with devotion—Keeping God in the Small Stuff. Everything we have is on loan to us from God.

The minutes of the Annual Meeting as well as the minutes of the last council meeting were reviewed. A couple of items were corrected on the Annual Meeting Minutes. One spelling correction was noted on the regular council meeting minutes. A motion was made to accept the minutes with the corrections by Sue Draper and seconded by Willie Cooper. Motion passed.

Nelson Haugh presented the Treasurer’s Report. He reported that the humidifier was more expensive than previously estimated. He said that the solenoid valve was \$160 and the labor was \$60. This is part of the building maintenance bill. The remainder of the charge was for the annual check. The Worship Supplies were for the fluid for the candles. Nelson has been able to get the fluid at a cheaper price by purchasing the fluid from a local company instead of ordering from Kerry Candle (\$49 versus \$80). We are in the black by \$2,294.71 thanks to a large check received from a member of the congregation. Willie Cooper asked if the offerings improved after the stewardship meeting. Nelson said that the offerings have not really improved. Kerri made a motion to accept the Treasurer’s Report as presented. Pastor Natacha Kemp seconded the motion. Motion passed. Willie asked whether Pastor could second motions. Pastor said that she could second motions but that she could not make motions.

Nelson announced that the attendance on Christmas Eve was 88. 44 of those were visitors. Nelson felt that changing the time to 6:00 p.m. helped. We had good attendance at the Children’s Service, too.

A big future expense will be the furnaces in the sanctuary. The cost to replace these will be around \$5,000. Another expense will be the removal of the tree in the patio area. The concrete is cracking from the root growth so the tree needs to be removed.

Nelson gave the council some figures from the past year’s giving.

YEAR	OFFERING TOTAL	DIFFERENCE FROM EXPENSES
2008	\$118,000	+ \$9,000
2007	114,000	+ 11,000
2006	123,750	+ 27,000
2005	120,000	+ 20,000

Differences in giving and expenses in 2009 and 2010 were in the negative. If we continue in this pattern, we will not be here in 4 or 5 years. Our doors will close.

Previously, the Women’s Group paid \$700 one month to help with expenses. That really helped. Giving did go up in the past after we had a catered Stewardship Dinner. The catered meal cost about \$700. Guest speakers have included Len Dale, Pastor Sally Fahrenthold , and Len Dale.

The Council continued to discuss Stewardship. Attendance has gone down. No new members have come in. Willie felt that Saturday Night was a good outreach for us but she doesn’t know if that is the answer. Pastor commented that she is not impressed with what is available for Stewardship Drives from the synod.

Pastor said that our bylaws need to be updated. We are currently using the 2007 bylaws. Pastor will find the guidelines so we can move forward on getting our bylaws updated.

Pastor also reported that she has updated the record book. She is now going back and trying to fill in some birth-dates that are missing. Pastor told the council about her recent visits to see the shut-ins.

A new adult Sunday School program is going to be starting—God in the R-E-A-L World. It will be looking at God's word in pop culture. She will be borrowing this program from Phil Vickers from Immanuel in Hutchinson. Pastor is also checking with the people who have attended her Bible Study in the past to see if they are interested in another Bible Study.

Confirmation will resume on Sunday, January 9, at Cross of Glory. Kerri suggested that we have Confirmation at Good Shepherd sometimes as well even though most of the students are from Cross of Glory. Pastor will be taking the Confirmation kids to Georgetown on Sunday, January 16.

A youth leaders meeting will be held at Resurrection in Haysville on Tuesday, January 18. There is also a movie night being schedule for an upcoming Saturday. The students will still have regular confirmation class except for the Sunday listed above.

Tara Brubakken , Deacon, had nothing to report.

Sue Draper asked if anyone would like to help Nelson count money for the next month. Willie volunteered. This will be from this council meeting to the next council meeting.

Willie, Mission Coordinator, reported that those who attended caroling had a great time. Cookies were taken to the shut-ins at the time of caroling. Willie also reported that the mid-week Advent soup suppers went fairly well.

The Council has decided to discontinue the potluck meals at this time. Several people have reported that we are having the potluck meals to often. Perhaps the Men's Group will be able to host a Shrove Tuesday pancake feed and maybe someone will host an Easter breakfast. Kerri Kuhlman commented that she would like to see the annual picnic moved back to the park. Maybe moving the date back into September would allow for cooler temperatures.

Pastor asked about the meals before mid-week Lenten services. Pastor has been in contact with Pastor Graves since they will be hosting this year. Nelson and Kerri thought it was a good fellowship time. Pastor will let Pastor Graves know.

Sue Draper brought up the idea of sharing a Pastor since this was discussed at the Annual Meeting. Pastor has spoken with the synod about this possibility. Cross of Glory has just now formed a Call Committee to call a pastor for their church. Sue said that rather than loose the church we need to be active now to prevent that happening.

The Council discussed things that we needed in our church to keep members active and to get new members. Nelson suggested that each Council member bring a list of items to the next Council meeting. Congregation members can give their input, too.

The mission statement was discussed. Where are we at on the new mission statement? Pastor reported that Pastor Dave Fulton would like us to have goals in place to go with the mission statement. Committee members working on this are Bob Hansen and Lynn Standrich along with Pastor. Earl McCain is unable to participate at this time.

Nelson reported that Dolores Haugh wants to have the Yard Sale on August 4, 5, and 6. The date of the Craft Fair will be November 5. The Council approved these dates.

Respectfully submitted,

Kerri Kuhlman, Secretary

February 2011

Sun	Mon	Tue	Wed	Thu	Fri	Sat
		1 9:30a Monthly Clergy Meeting @ Christ—Wichita	2 Ground Hogs Day	3	4	5 3:30p confirmation
6 9:00 Sunday School 10:15 Worship	7 Pastor's Day Off 7:00 Council	8 9am Text Study @ St. Paul's	9	10	11	12 9:30 Women of the ELCA 3:30p confirmation
13 9:00 Sunday School 10:15 Worship 3:00 Secret Heart	14 Pastor's Day Off	15 9am Text Study @ St. Paul's	16	17	18	19
20 9:00 Sunday School 10:15 Worship 3:30p confirmation	21 Pastor's Day Off	22 9am Text Study @ St. Paul's	23	24	25	26
27 9:00 Sunday School 10:15 Worship 3:30p confirmation	28 Pastor's Day Off					

Men's Fellowship

President: Don Leidheiser
Secretary: Roger Brubakken
Treasurer: Earl McCain

Women of ELCA

President: Dolores Haugh
Vice President: Mary Bryant
Secretary: Willie Cooper
Treasurer: Lorraine Delzer

2011

Council Members

President: Sue Draper
Vice President: Brent Albright
Secretary: Kerri Kuhlman
Deacon: Tara Brubakken
Elder: Vacant
Mission Coordinator: Willie Cooper
Treasurer: Nelson Haugh

*I am the
good
shepherd.
I know
my own
and my
own know
me, just as the Father knows me and I know
the Father. And I lay down my life for the sheep.
I have other sheep that do not belong to this fold. I
must bring
them also,
and they
will listen
to my voice.
So there
will be one
flock, one
SHEPHERD.
John 10:14-16*

GOOD SHEPHERD LUTHERAN CHURCH
1451 E. 47th Street South
PO Box 16269
Wichita, KS 67216-0269